

R&M Substations

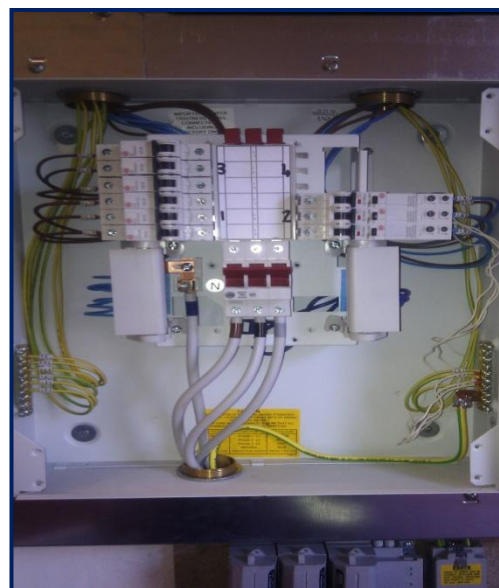
St. Andrews Cross Substation

IQA were assigned by Iberdrola to perform the refurbishment of electrical installation in St. Andrews Cross Substation in Glasgow. IQA completed the installation of lighting and small power within the 275kV substation.

Prior to works being carried out, designs were created and subsequently verified by an external Company to ensure complete precision.

St. Andrews Cross substation was a considerable size and the largest job to date, completed by IQA R&M Substations.

Consistent noise and extremely hot conditions within the substation caused uncomfortable surroundings for operatives, the solution to which involved use of appropriate PPE and sufficient supply of bottled water to maintain hydration. These conditions were due to the fact two transformer bays were situated within the substation and as the transformer draws more power, a greater amount of noise and heat will generate.



During these works, confined space also presented an issue for IQA operatives. As they ran cable from one end of the substation to another, space was restricted and therefore breathing apparatus was made readily available, operatives were given an alarm to wear, in the event they became stuck and a method statement was created in conjunction, to support modifications of working.

IQA Group successfully completed the works within the agreed timescale of 12 weeks.

